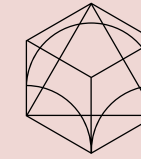




INTHETILE

ITT
Collection

2022 Edition



INTHETILE

Born as an innovative company, through the design and creation of ceramic materials through PVD techniques, INTHETILE is currently a company recognized as an international reference in the field of ceramic surface treatments. From initial concept to its production, from the design to its execution, from commercial approach to its promotion, all these stages are coordinated at INTHETILE to ensure that customer needs are met through their experience with our products.

The passion for technology and the sense of the material, the union of professionalism and experience, the combination of creative freedom and customization and a deep sensitivity and absolute traceability are attributes that define our INTHETILE strategy.

Innovative cutting-edge industrial processes combine with the ceramic tradition to create unique collections.

Nacida como una empresa innovadora, diseñando y creando materiales cerámicos metalizados mediante técnicas PVD, en la actualidad INTHETILE es una compañía reconocida como un punto de referencia internacional en el ámbito de los tratamientos superficiales cerámicos.

Desde el concepto inicial hasta la producción, desde el diseño hasta su ejecución, desde asesoramiento comercial hasta la promoción, todas estas etapas se coordinan en INTHETILE para garantizar que se cumplan las necesidades del cliente a través de su experiencia con nuestros productos.

La pasión por la tecnología y el sentido del material, la unión de profesionalidad y experiencia, la combinación de libertad creativa y la personalización, y una profunda sensibilidad y absoluta trazabilidad son atributos que definen la estrategia de INTHETILE.

Los procesos industriales innovadores de vanguardia se combinan con tradición cerámica para crear colecciones únicas.

ITT Collection

Creativity hallmarked by naturalness.

It is the axiom on which we have built our innovation path.

The metal, respected and considered in all its simplest and most genuine structural and aesthetic qualities, is rethought in each of our series based on its direct relationship with the diversity of ceramic tiles materials proposed in this ITT Collection.

Creatividad marcada por la naturalidad.

Es el axioma sobre el que hemos construido nuestro camino de innovación.

El metal, respetado y considerado en todas sus cualidades estructurales y estéticas más simples y genuinas, se replantea en cada una de nuestras series en función de su relación con la diversidad de materiales cerámicos propuestos en esta Colección ITT.

Index

Dover	24
Kondo	30
Metrik	36
Trames	42
Angles	48
Cosmos	54
Become	60
Madreperla	66
2Lines	70
Mist	76
Urban	82
Slate	88
Artic	94
Fusion	98
Tempo	102

Series Range

Dover



Kondo



Metrik



Frames



Angles



Cosmos



Become

Madreperla



2Lines



Mist



Urban



Slate



Artic



Fusion



Tempo



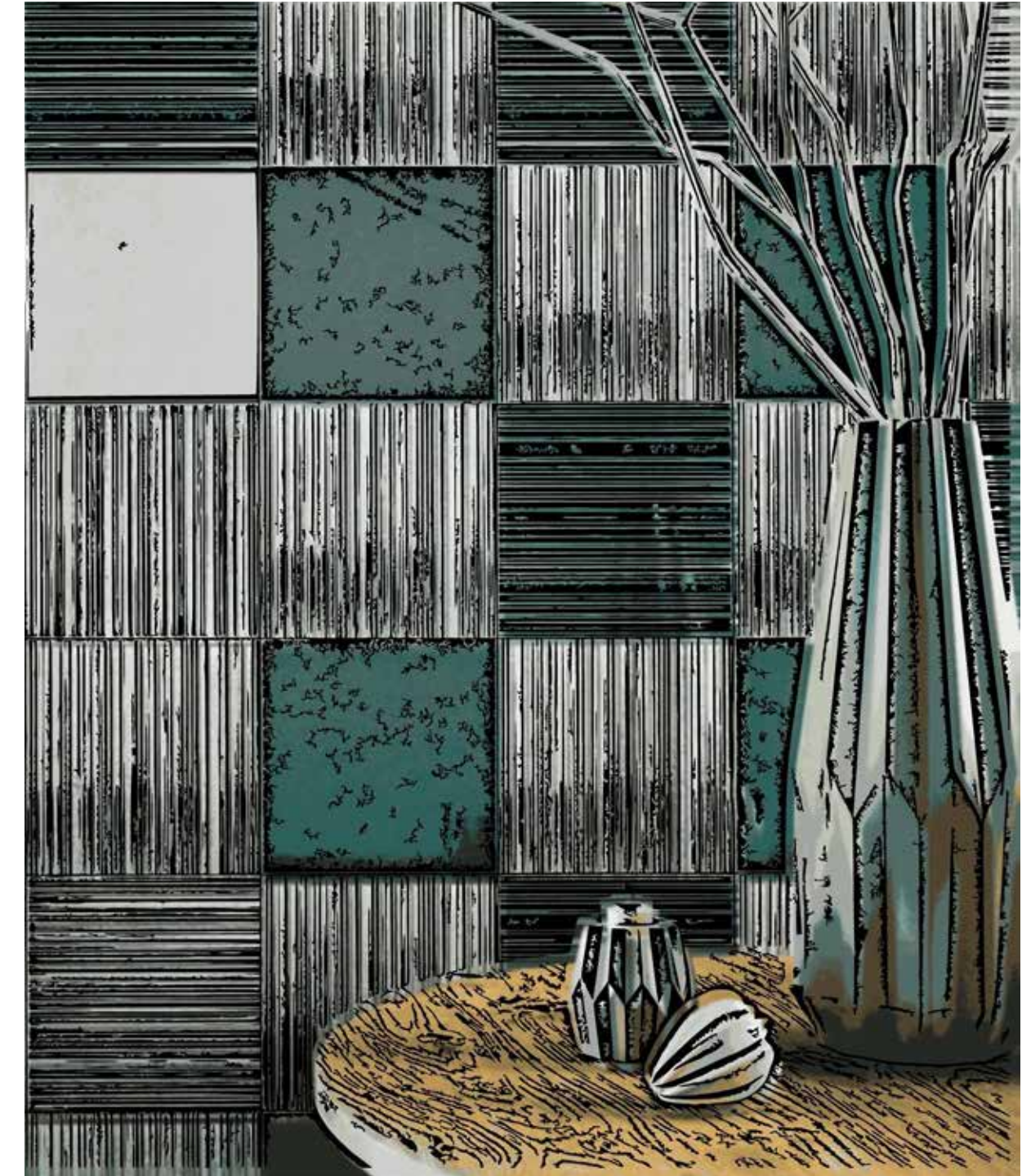
Product Range

Dover

DOVER is a new and seductive series that combines handicraft and modernity reinterpreting an elegant textile effect in a modern way. With an extremely current color palette, this series is characterized by an elegant and refined timeless relief that makes the surfaces vibrate creating original and sophisticated atmospheres.

DOVER es una nueva y seductora serie que combina la artesanía y la modernidad reinterpretando en clave moderna un elegante efecto textil.

Con una paleta de colores sumamente actual, esta serie se caracteriza por la refinada trama matérica intemporal que hace vibrar las superficies creando atmósferas originales y sofisticadas.





Dover



15x15 cm



Dover 1



Dover 2

Color <i>Color</i>	Size <i>Formato</i>	Finish <i>Acabado</i>
Silver	15x15cm - 6"x6"	Glossy / <i>Brillo</i>
Gold	15x15cm - 6"x6"	Glossy / <i>Brillo</i>
Rose Gold	15x15cm - 6"x6"	Glossy / <i>Brillo</i>
Aubergine	15x15cm - 6"x6"	Glossy / <i>Brillo</i>
White	15x15cm - 6"x6"	Glossy / <i>Brillo</i>
Marsala	15x15cm - 6"x6"	Glossy / <i>Brillo</i>
Jade	15x15cm - 6"x6"	Glossy / <i>Brillo</i>
Blue	15x15cm - 6"x6"	Glossy / <i>Brillo</i>
Black	15x15cm - 6"x6"	Glossy / <i>Brillo</i>

White body / *Pasta blanca*
 Thickness: 7mm (0,27") / *Espesor: 7mm*
 Internal walls covering / *Revestimiento paredes interiores*



Silver 1 Gold 1 Rose Gold 1 Aubergine 1



Silver 2 Gold 2 Rose Gold 2 Aubergine 2



White 1 Marsala 1 Jade 1



White 2 Marsala 2 Jade 2



Black 1 Blue 1

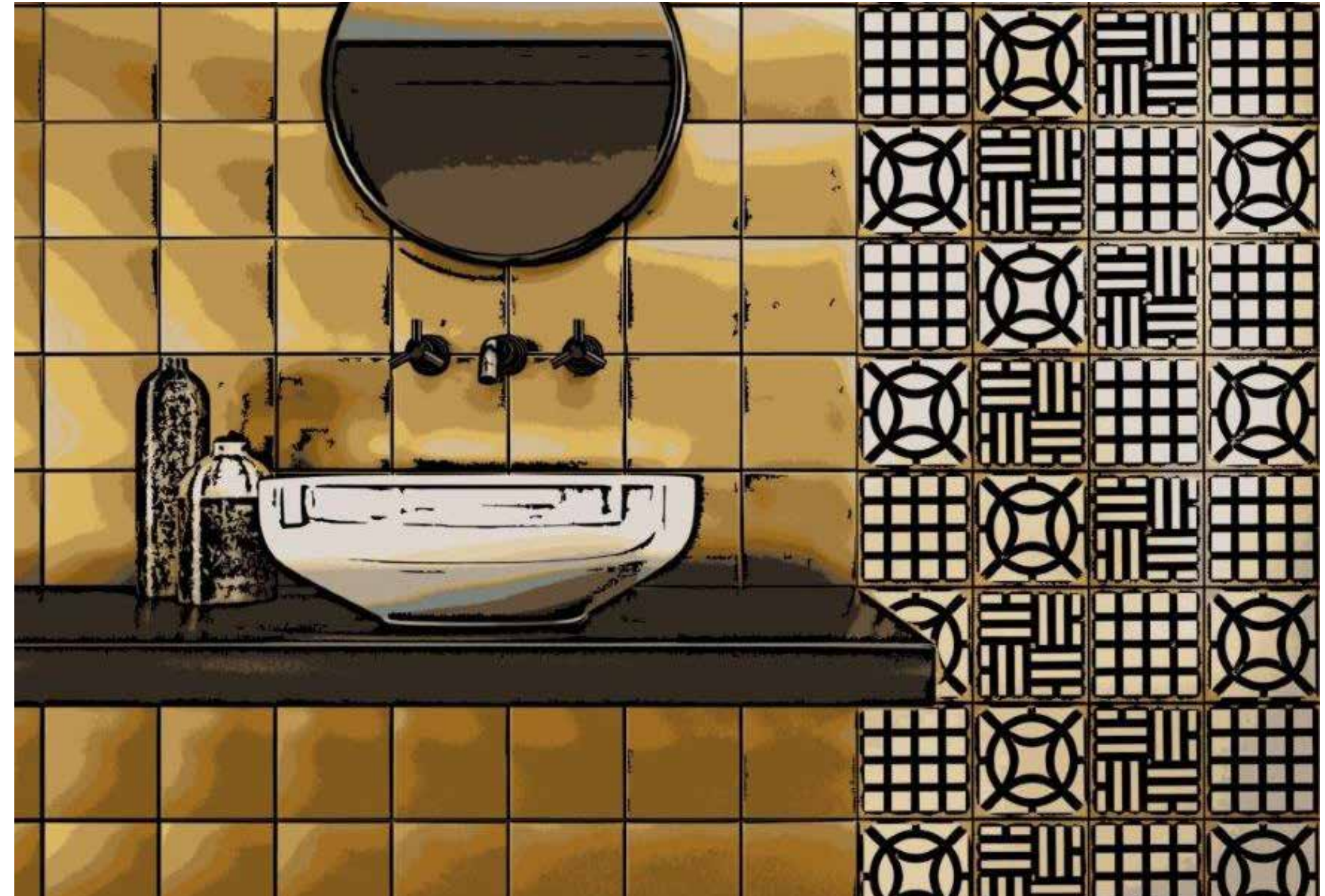


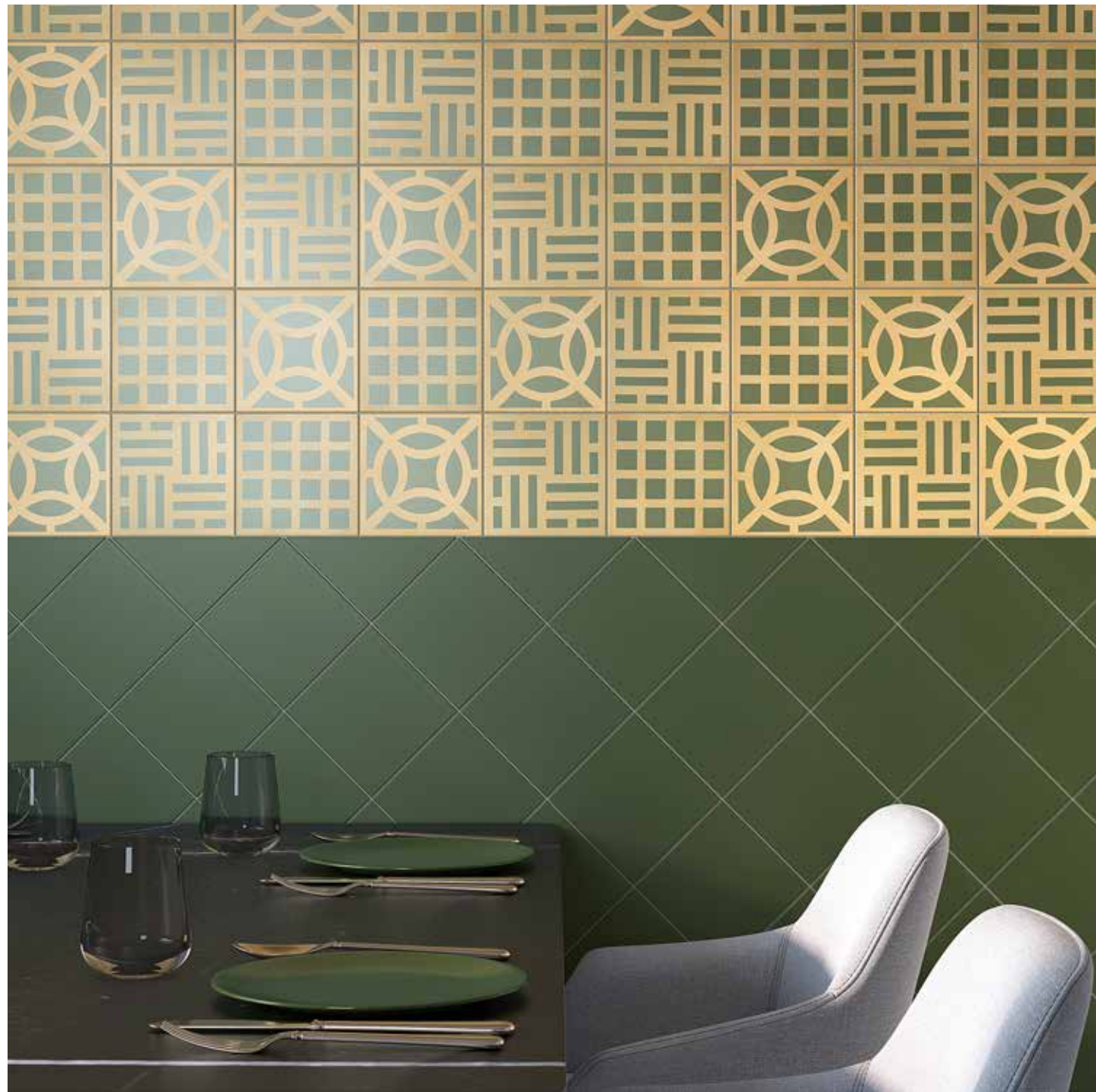
Black 2 Blue 2

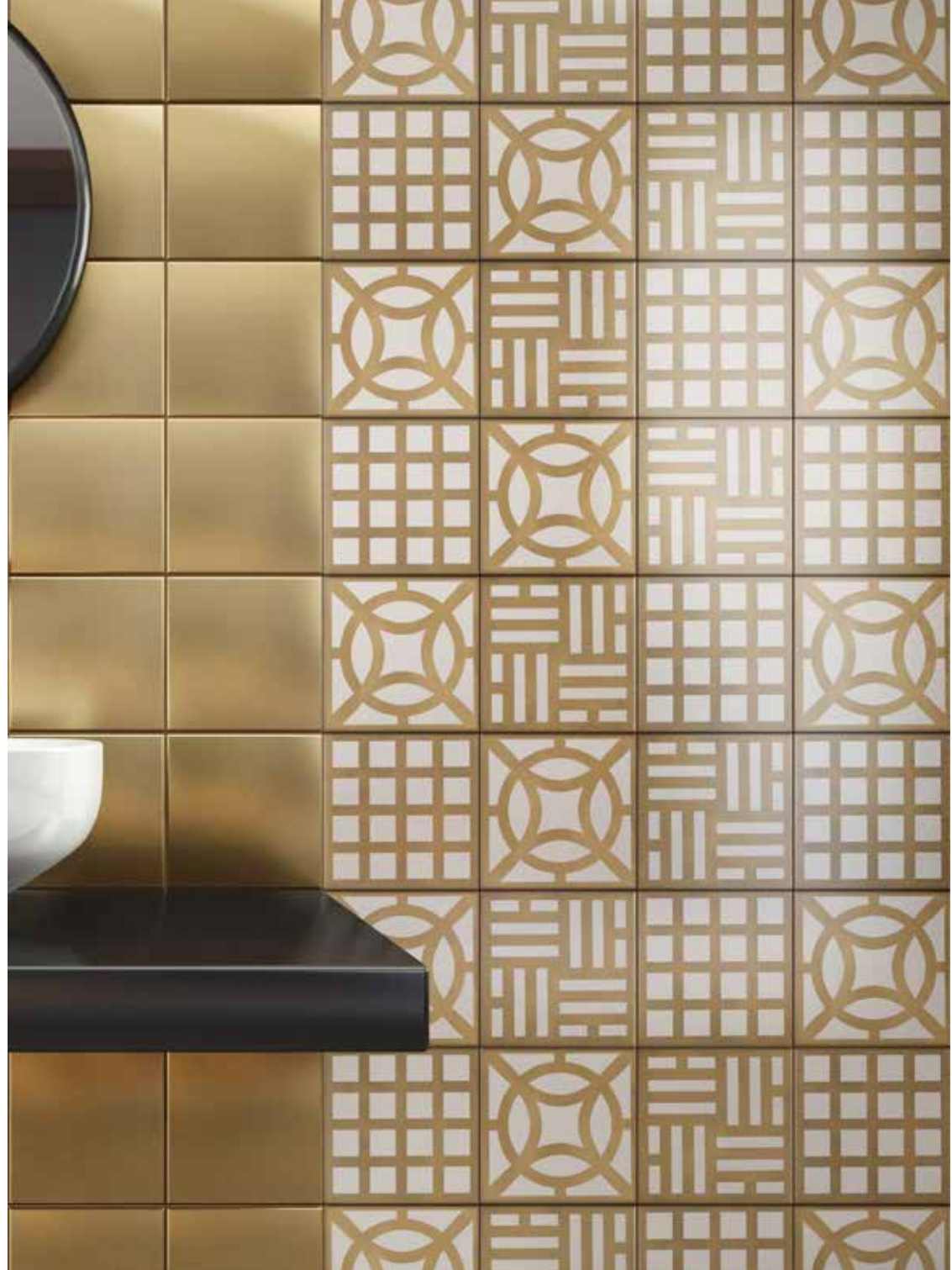
Kondo

KONDO is a ceramic tile series inspired by the past, based on the elegance of old ceramic tiles and the originality of hydraulic tiles. Its only purpose is to surprise and fall in love, through its oxide finishes that reflect the wear of the metal. This series allows obtain numerous decorative alternatives for its multiple combinations of designs, colors and metallic finishes, to be able to adapt to the needs of each design proposal.

KONDO es una serie cerámica inspirada en el pasado, basada en la elegancia de las antiguas baldosas y en la originalidad de los azulejos hidráulicos. Su único propósito es sorprender y enamorar, a través de sus acabados en óxido que reflejan el desgaste del metal. Esta serie permite obtener numerosas alternativas decorativas gracias a sus múltiples combinaciones de diseños, colores y acabados metalizados, para poder adaptarse a las necesidades de cada propuesta de diseño







Kondo

15x15 cm



Kondo 1



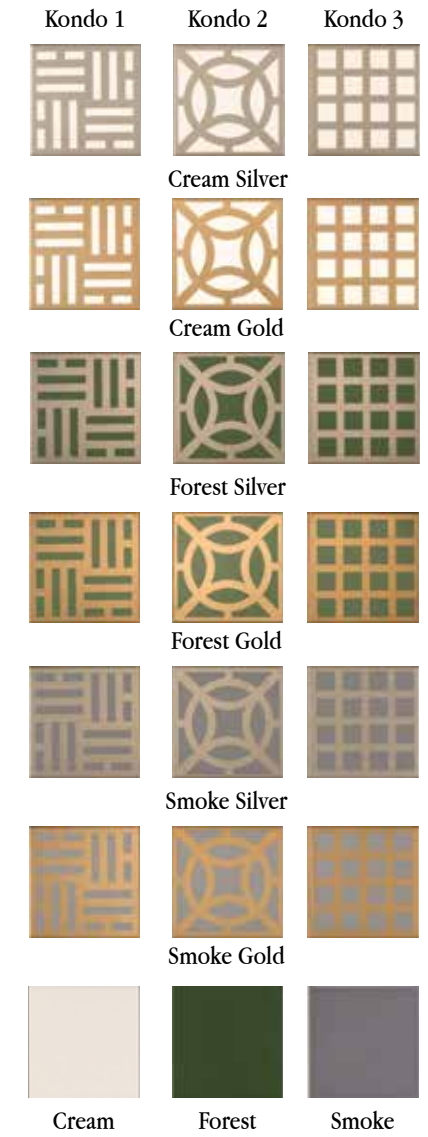
Kondo 2



Kondo 3

Color <i>Color</i>	Size <i>Formato</i>	Finish <i>Acabado</i>
Cream/Silver	15x15cm - 6"x6"	Matt / <i>Mate</i>
Cream/Gold	15x15cm - 6"x6"	Matt / <i>Mate</i>
Forest/Silver	15x15cm - 6"x6"	Matt / <i>Mate</i>
Forest/Gold	15x15cm - 6"x6"	Matt / <i>Mate</i>
Smoke/Silver	15x15cm - 6"x6"	Matt / <i>Mate</i>
Smoke/Gold	15x15cm - 6"x6"	Matt / <i>Mate</i>
Cream	15x15cm - 6"x6"	Matt / <i>Mate</i>
Forest	15x15cm - 6"x6"	Matt / <i>Mate</i>
Smoke	15x15cm - 6"x6"	Matt / <i>Mate</i>

White body / *Pasta blanca*
 Thickness: 8mm (0,31") / *Espesor: 8mm*
 Internal walls covering / *Revestimiento paredes interiores*

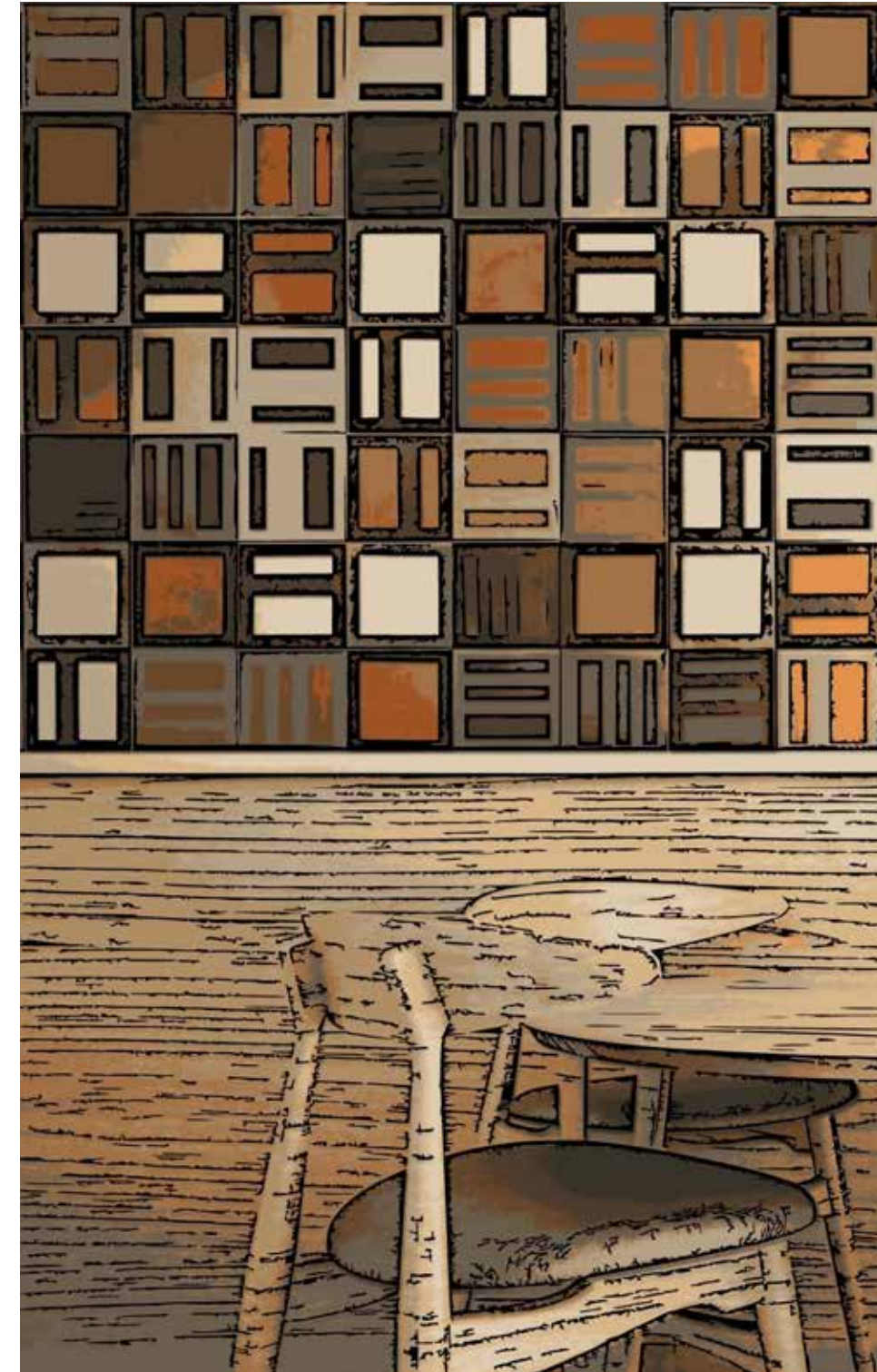


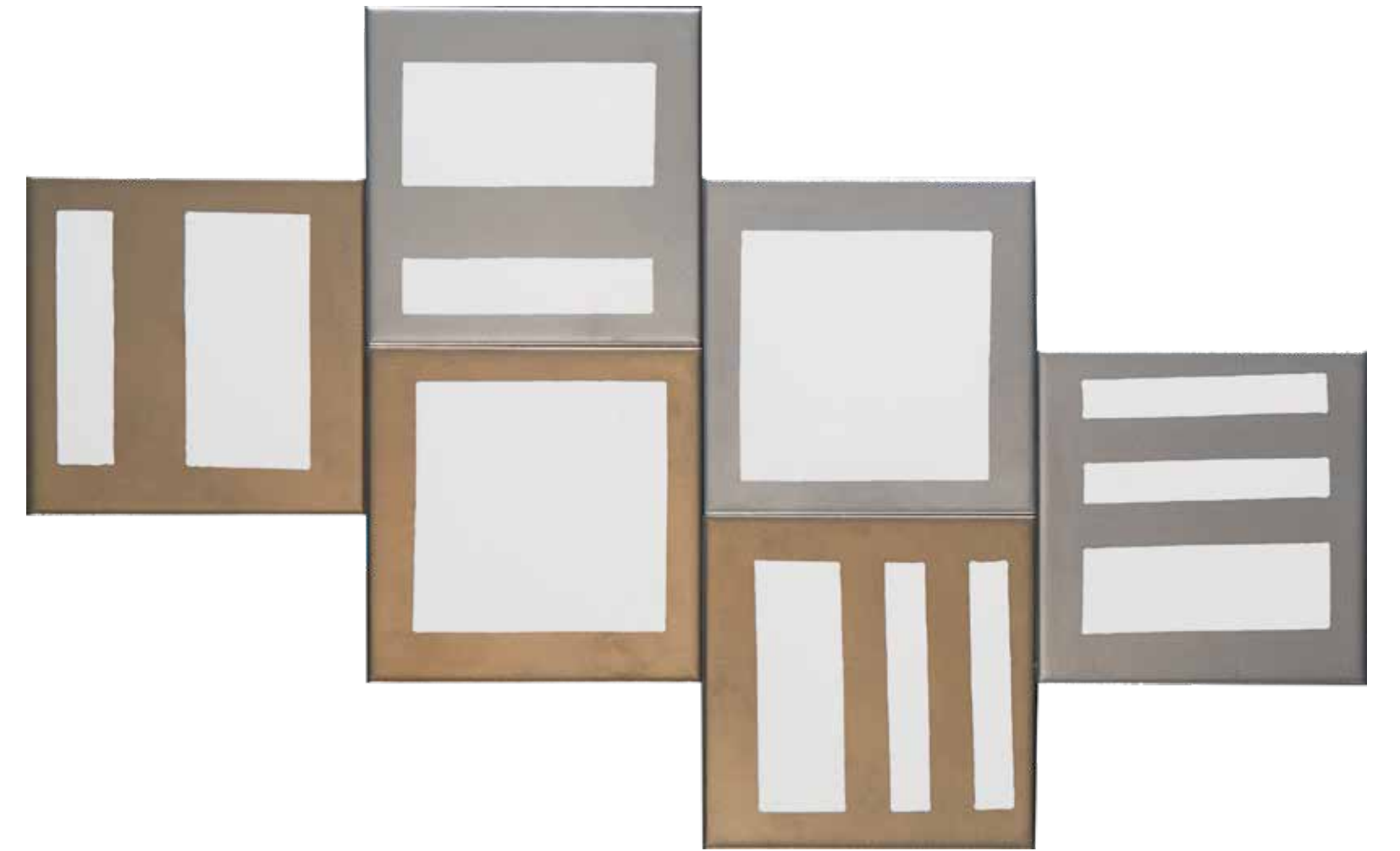
Metrik

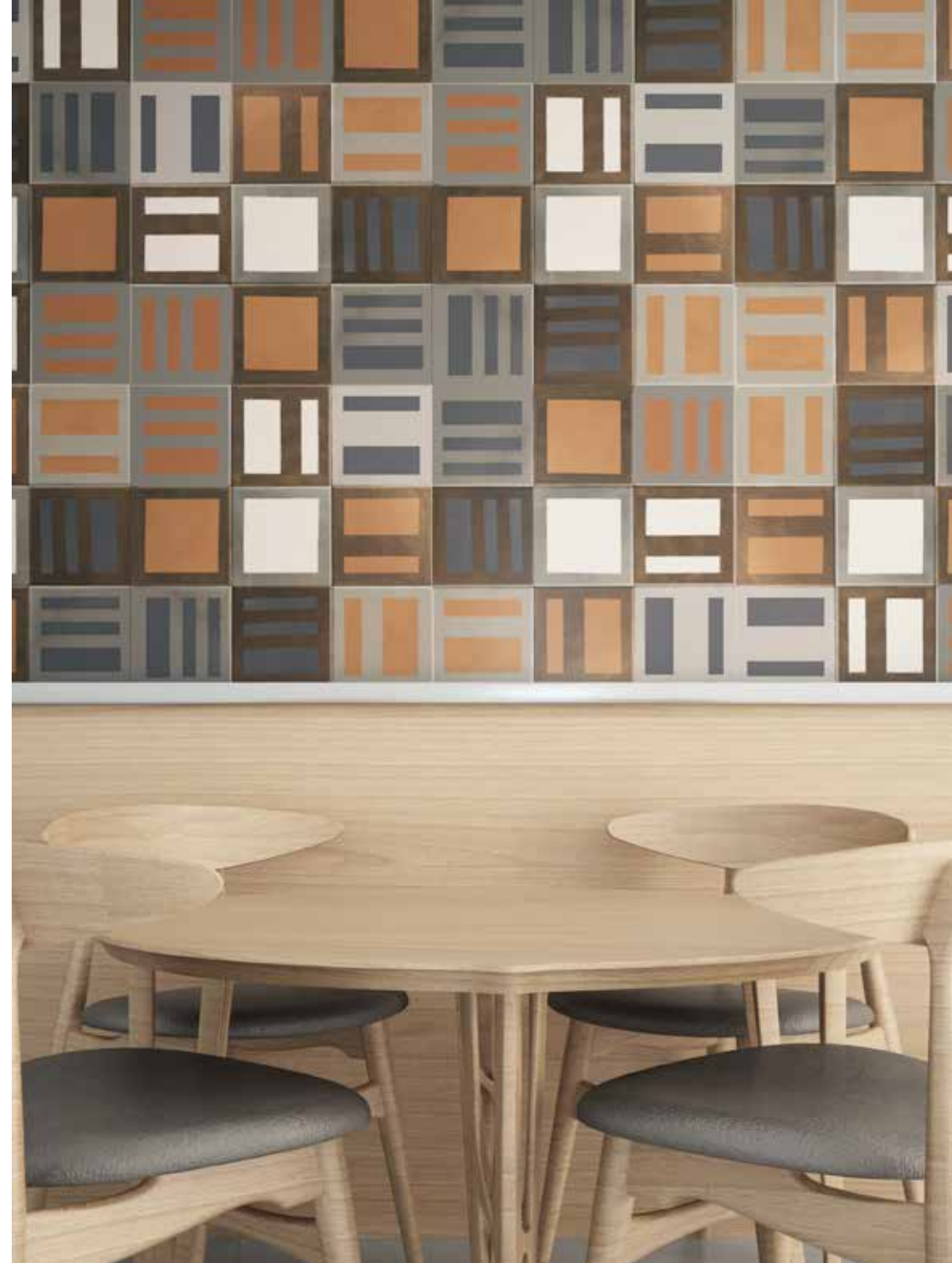
METRIK is inspired by ceramic lattices, used to improve exterior and interior spaces, giving meaning to the term form and function, providing elegance and decorative beauty. The division of spaces takes on a new dimension through this proposal based on different highly decorative geometric and organic shapes.

METRIK es una serie inspirada en las celosías cerámicas, utilizadas para mejorar los espacios exteriores e interiores dando sentido al término forma y función, proporcionando elegancia y belleza decorativa.

La división de espacios adquiere una nueva dimensión mediante esta propuesta basada en diferentes formas geométricas y orgánicas muy decorativas.







Metrik

15x15 cm



Metrik 1



Metrik 2



Metrik 3

Color <i>Color</i>	Size <i>Formato</i>	Finish <i>Acabado</i>
Cream/Silver	15x15cm - 6"x6"	Matt / <i>Mate</i>
Cream/Gold	15x15cm - 6"x6"	Matt / <i>Mate</i>
Caramel/Silver	15x15cm - 6"x6"	Matt / <i>Mate</i>
Caramel/Gold	15x15cm - 6"x6"	Matt / <i>Mate</i>
Smoke/Silver	15x15cm - 6"x6"	Matt / <i>Mate</i>
Smoke/Gold	15x15cm - 6"x6"	Matt / <i>Mate</i>
Cream	15x15cm - 6"x6"	Matt / <i>Mate</i>
Caramel	15x15cm - 6"x6"	Matt / <i>Mate</i>
Smoke	15x15cm - 6"x6"	Matt / <i>Mate</i>

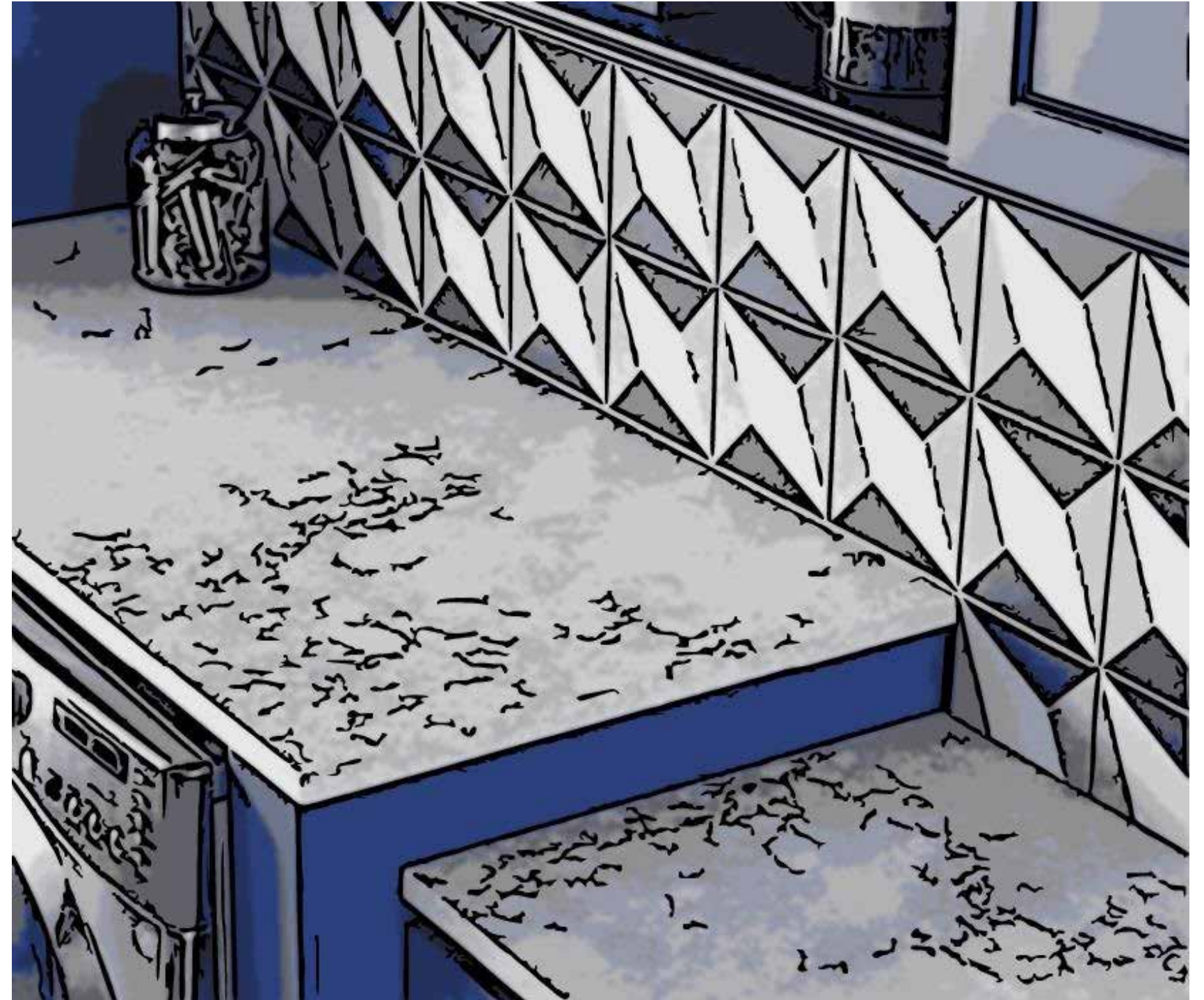
White body / *Pasta blanca*
 Thickness: 8mm (0,31") / *Espesor: 8mm*
 Internal walls covering / *Revestimiento paredes interiores*



Frames

With TRAMES series we return to the most classic uses of metallic ceramics with complete decorations in which the combinations of colors, the mixture of gloss and matte, and the subtle proposals with false volumes become the best allies of any design proposal.

La serie TRAMES permite volver a los usos más clásicos de los metalizados con decoraciones completas en las que las combinaciones de colores, la mezcla de brillo y mate, y los juegos sutiles con falsos volúmenes se convierten en los mejores aliados de cualquier propuesta de diseño.







Trames

15x15 cm



Trames 1



Trames 2

Color <i>Color</i>	Size <i>Formato</i>	Finish <i>Acabado</i>
White/Silver	15x15cm - 6"x6"	Matt / <i>Mate</i>
White/Gold	15x15cm - 6"x6"	Matt / <i>Mate</i>
Black/Silver	15x15cm - 6"x6"	Matt / <i>Mate</i>
Black/Gold	15x15cm - 6"x6"	Matt / <i>Mate</i>
White	15x15cm - 6"x6"	Matt / <i>Mate</i>
Black	15x15cm - 6"x6"	Matt / <i>Mate</i>

White body / *Pasta blanca*
 Thickness: 8mm (0,31") / *Espesor: 8mm*
 Internal walls covering / *Revestimiento paredes interiores*

Trames 1 Trames 2



White Silver



White Gold



Black Silver



Black Gold



White

Black

Angles

With the ANGLES series we intend to play with the traditional concept of ceramics. With a triple three-dimensional design, the combination of its pieces allows numerous decorative proposals.

All designs offer a large number of modes of disposition, so that we have the opportunity to propose placements according to the possibilities of each space.

Con la serie ANGLES pretendemos jugar con el concepto tradicional de la cerámica. Con un triple diseño tridimensional, la combinación de sus piezas permite numerosas propuestas decorativas.

Todos los diseños ofrecen una gran variedad de modos de disposición de forma que se tiene la oportunidad de proponer colocaciones según las posibilidades de cada espacio.





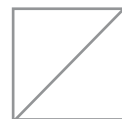


Angles

15x15 cm



Angles 1



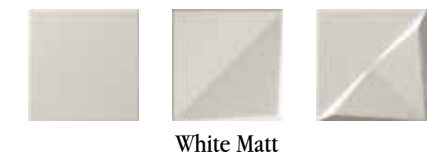
Angles 2



Angles 3

Color <i>Color</i>	Size <i>Formato</i>	Finish <i>Acabado</i>
Silver	15x15cm - 6"x6"	Glossy / <i>Brillo</i> Matt / <i>Mate</i>
Gold	15x15cm - 6"x6"	Glossy / <i>Brillo</i> Matt / <i>Mate</i>
Rose Gold	15x15cm - 6"x6"	Glossy / <i>Brillo</i> Matt / <i>Mate</i>
White	15x15cm - 6"x6"	Glossy / <i>Brillo</i> Matt / <i>Mate</i>

White body / *Pasta blanca*
 Thickness: 8mm (0,31") / *Espesor: 8mm*
 Internal walls covering / *Revestimiento paredes interiores*



White Matt

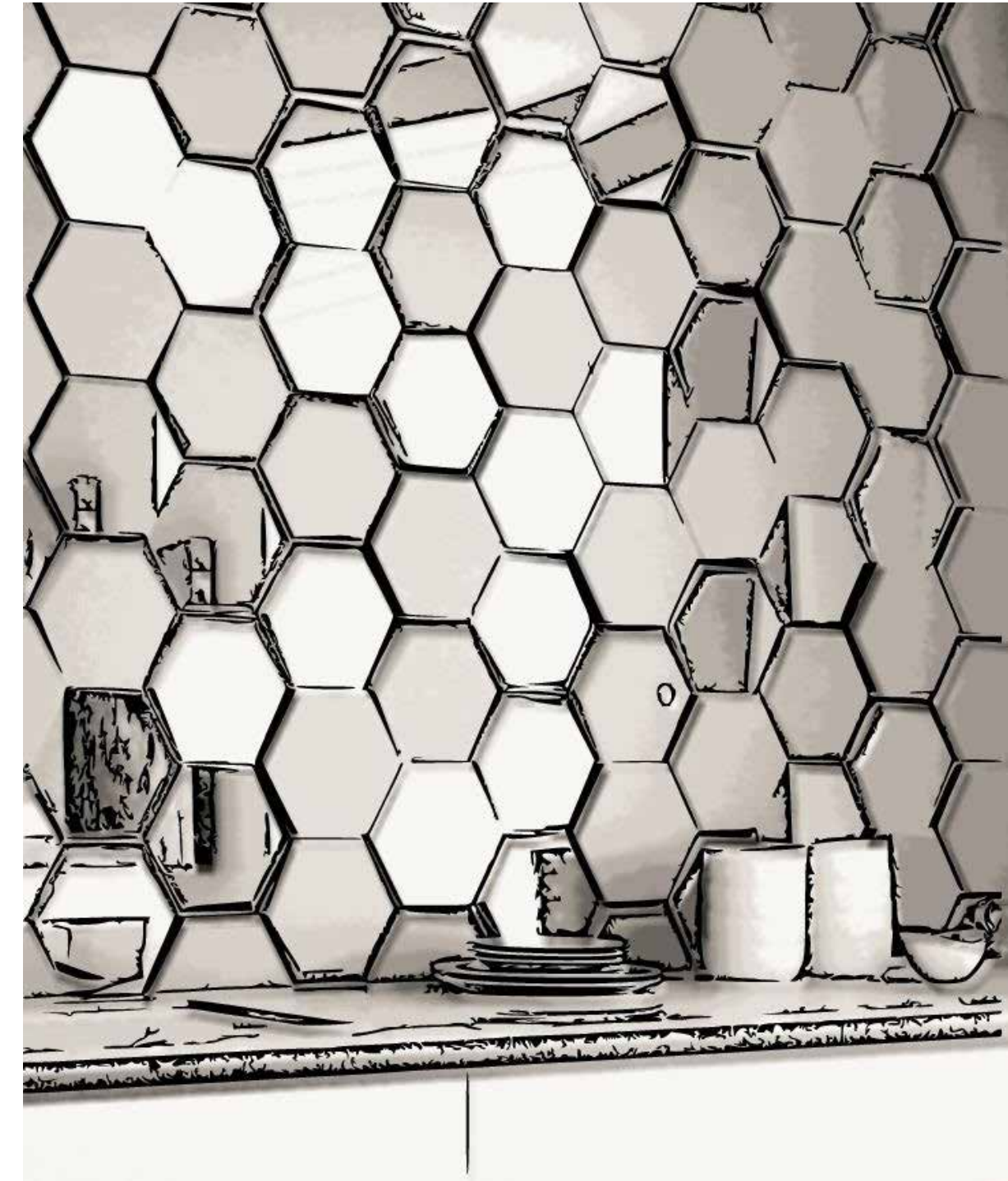
Cosmos

Hexagonal series with marked three-dimensional accent, available in three types of relief, to provoke a very powerful aesthetic result, where light and shadow plays have a fundamental role.

Our COSMOS models combine 3 colors and reliefs, where the proposed placement can be regular or random, combining models with each other, so that you can get very diverse compositions but never repetitive.

Serie hexagonal con marcado acento tridimensional, disponible en tres tipos de relieve, para provocar un resultado estético muy potente, donde la luz y los juegos de sombras tienen un papel fundamental.

Cada modelo COSMOS combina 3 colores y relieves, donde la propuesta de colocación puede ser regular o aleatoria, combinando modelos entre sí, de forma que se pueden obtener composiciones muy diversas pero nunca repetitivas.







Cosmos

15x17 cm



Cosmos 1



Cosmos 2



Cosmos 3

Color <i>Color</i>	Size <i>Formato</i>	Finish <i>Acabado</i>
Silver	15x17cm - 6''x6,8''	Glossy / Matt <i>Brillo / Mate</i>
Gold	15x17cm - 6''x6,8''	Glossy / Matt <i>Brillo / Mate</i>
Rose Gold	15x17cm - 6''x6,8''	Glossy / Matt <i>Brillo / Mate</i>
Aubergine	15x17cm - 6''x6,8''	Glossy / Matt <i>Brillo / Mate</i>
White	15x17cm - 6''x6,8''	Glossy / Matt <i>Brillo / Mate</i>
Black	15x17cm - 6''x6,8''	Glossy / Matt <i>Brillo / Mate</i>

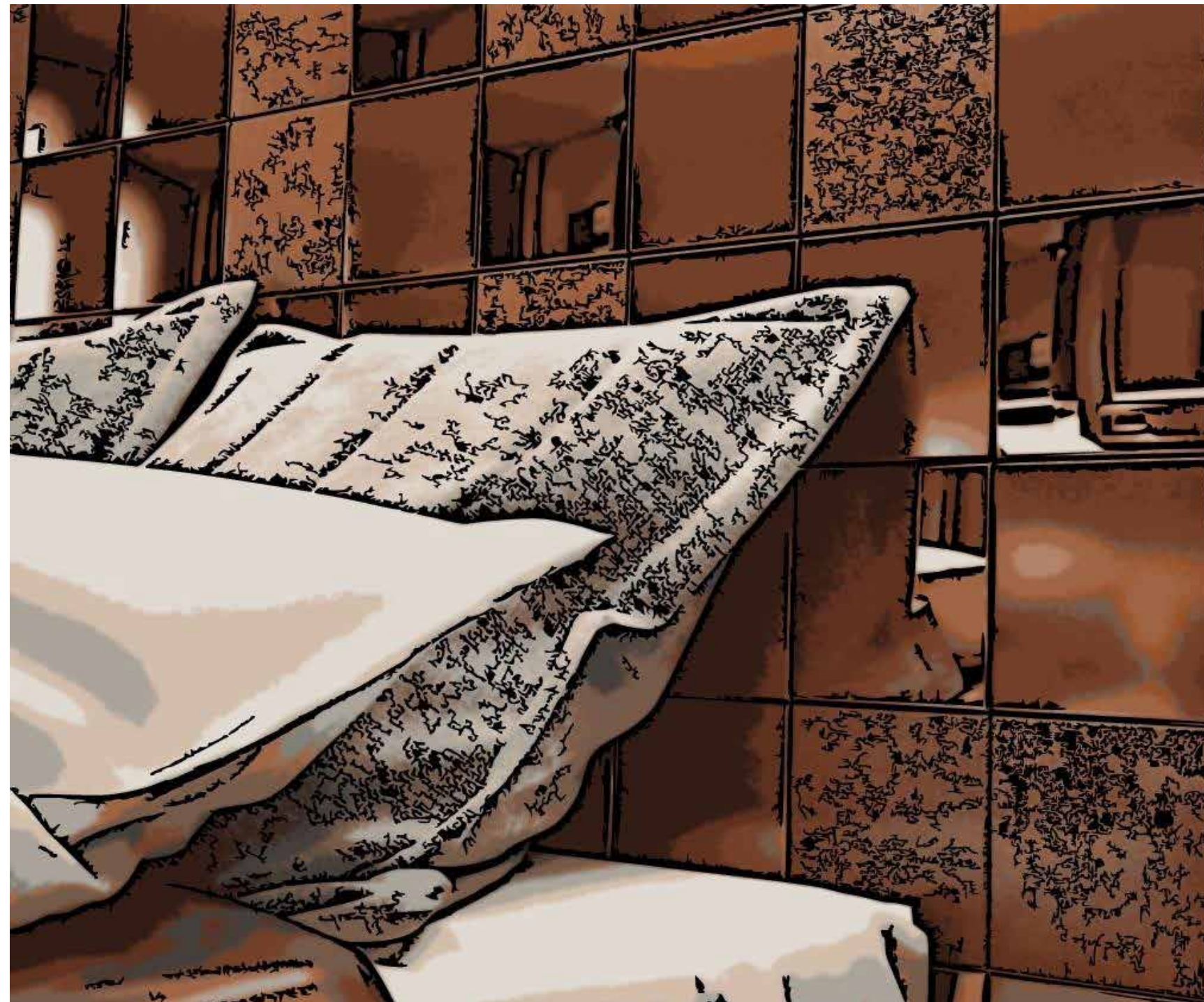
White body / *Pasta blanca*
 Thickness: 8mm (0,31") / *Espesor: 8mm*
 Internal walls covering / *Revestimiento paredes interiores*

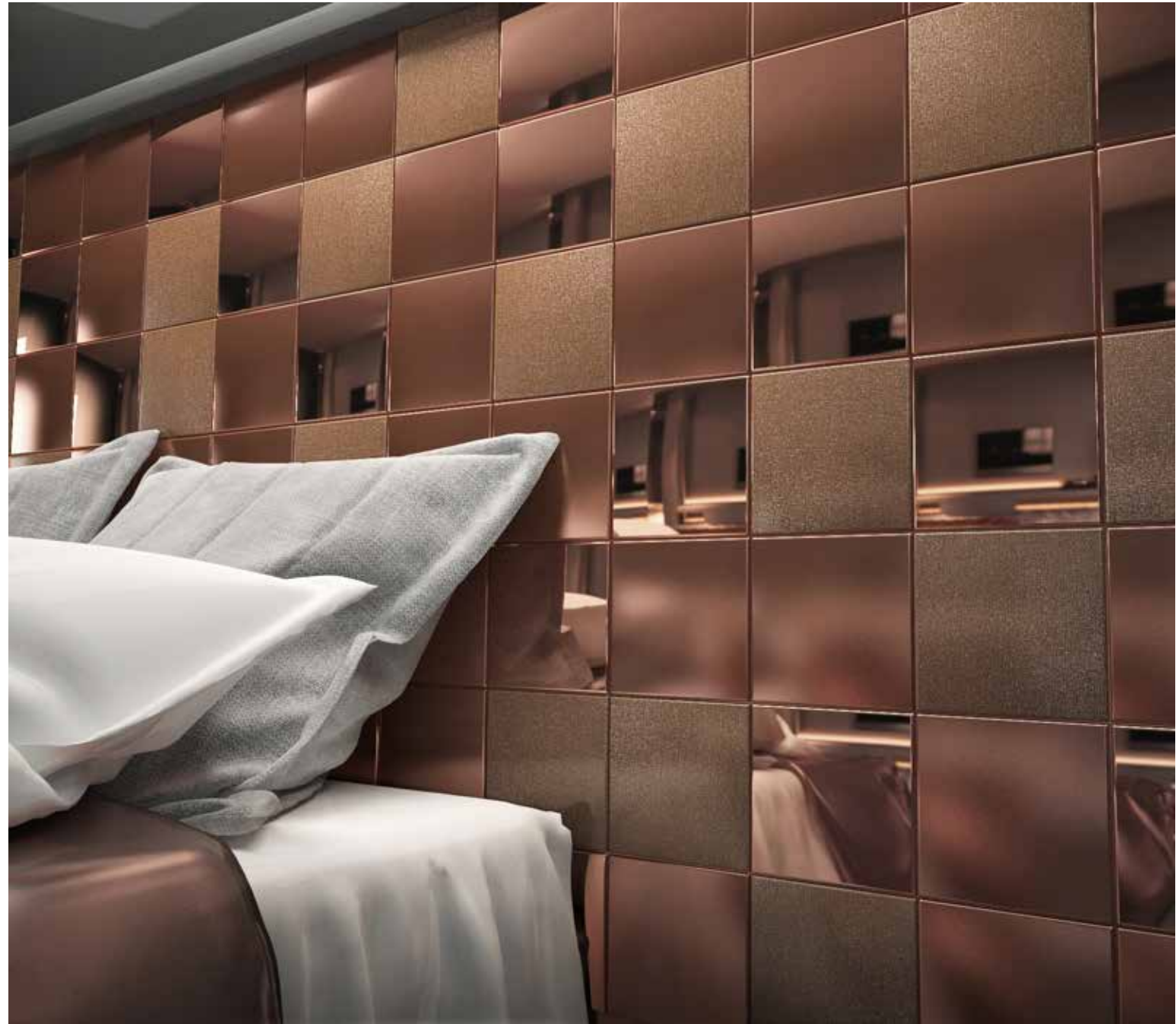


Become

BECOME reinterprets a classic use of metallic, with complete decorations in which the combinations of textures, the mixture of gloss-matte and the subtle games with volumes are complete allies of design. A clear trend towards neutral pieces, where timelessness is the key to design.

Con la serie BECOME se reinterpreta un uso clásico de los metalizados, con decoraciones completas en las que las combinaciones de texturas, la mezcla de brillo mate y los juegos sutiles con volúmenes son completos aliados del diseño. Una clara tendencia hacia piezas neutras, donde la atemporalidad es la clave del diseño.







Become

15x15 cm



Become M



Become G



Become T

Color <i>Color</i>	Size <i>Formato</i>	Finish <i>Acabado</i>
Silver	15x15cm - 6"x6"	Glossy / Matt / Text <i>Brillo / Mate / Text</i>
Gold	15x15cm - 6"x6"	Glossy / Matt / Text <i>Brillo / Mate / Text</i>
Rose Gold	15x15cm - 6"x6"	Glossy / Matt / Text <i>Brillo / Mate / Text</i>
Aubergine	15x15cm - 6"x6"	Glossy / Matt / Text <i>Brillo / Mate / Text</i>

White body / *Pasta blanca*
 Thickness: 8mm (0,31") / *Espesor: 8mm*
 Internal walls covering / *Revestimiento paredes interiores*

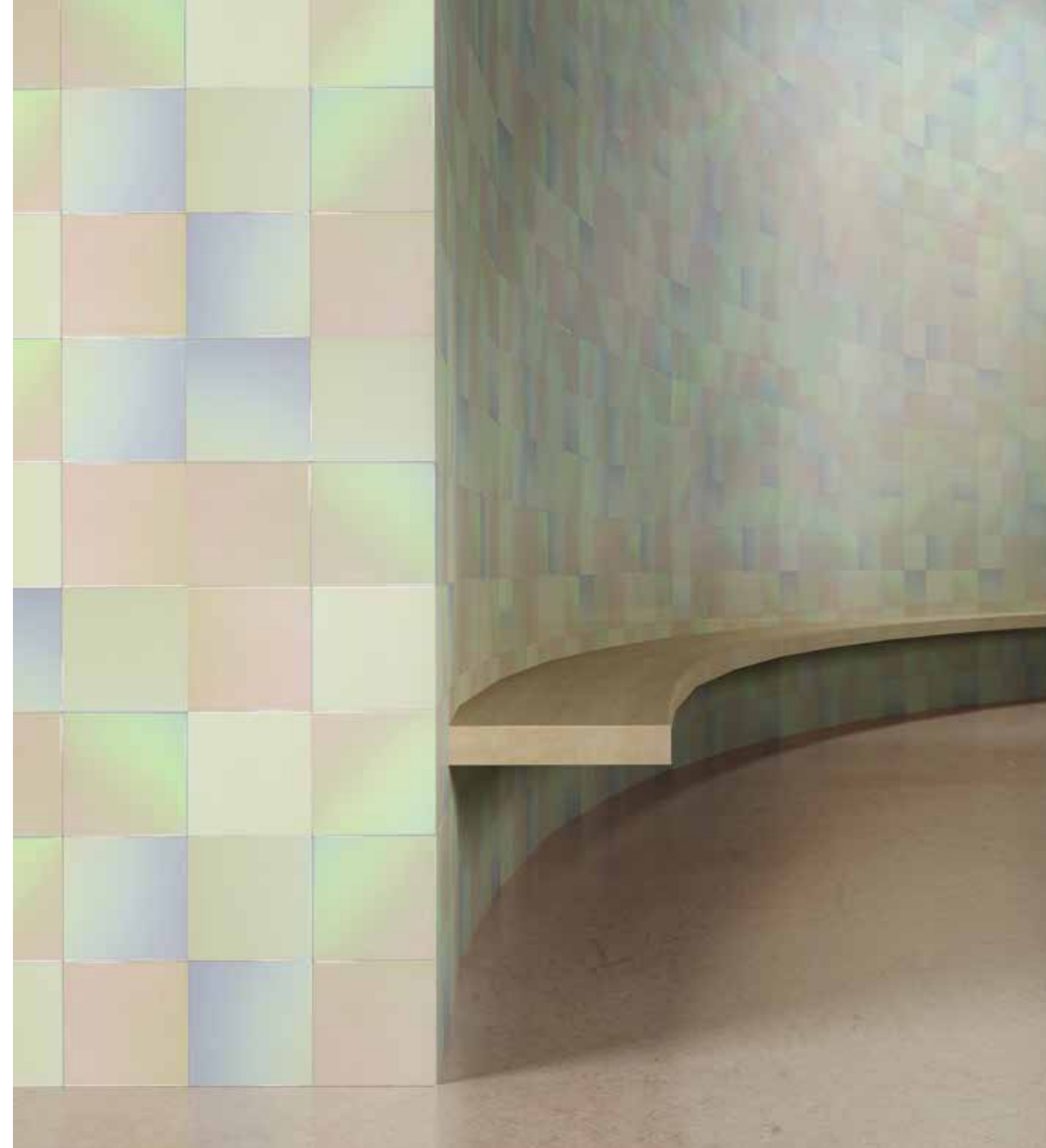


Madreperla

MADREPERLA has been developed to exalt spaces, creating a very stimulating and unconventional alternative visual atmosphere, with ethereal colors and decisive reflections that give life to refined and elegant decorative possibilities.

La serie MADREPERLA ha sido desarrollada para exaltar espacios, creando una atmósfera visual alternativa muy estimulante y nada convencional, con colores etéreos y decisivos reflejos que dan vida a posibilidades decorativas refinadas y elegantes.





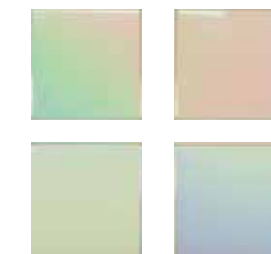
Madreperla

15x15 cm



Madreperla

Color <i>Color</i>	Size <i>Formato</i>	Finish <i>Acabado</i>
Madreperla	15x15cm - 6"x6"	Glossy / <i>Brillo</i>



Glossy

White body / *Pasta blanca*
 Thickness: 8mm (0,31") / *Espesor: 8mm*
 Internal walls covering / *Revestimiento paredes interiores*

The pieces have different shades and color gradients
Las piezas tienen diferentes tonalidades y degradados de color

2Lines

2LINES is a concept of metallic semi-polished porcelain with a modern and metropolitan spirit, aimed at the most advanced demands of architecture. In this series the geometric concept of lines to metal melts and the surface structure is combined with the sheen of polished and natural finishes, proposing unexplored visual sensations.

2LINES es un concepto de porcelánico semipulido metalizado con espíritu moderno y metropolitano, orientado a las exigencias más vanguardistas de la arquitectura. En esta serie se funde el concepto geométrico de sus líneas con el metal, y se combina la estructura superficial con el brillo de los acabados lappato y natural, proponiendo sensaciones visuales inexploradas.







2Lines

45x90 cm



2Lines

Color <i>Color</i>	Size <i>Formato</i>	Finish <i>Acabado</i>
Silver	45x90cm - 18"x36"	Semipolished / <i>Semipulido</i>
Gold	45x90cm - 18"x36"	Semipolished / <i>Semipulido</i>
Rose Gold	45x90cm - 18"x36"	Semipolished / <i>Semipulido</i>
Aubergine	45x90cm - 18"x36"	Semipolished / <i>Semipulido</i>

Porcelain tile / *Gres porcelánico*
 Thickness: 10mm (0,39") / *Espesor: 10mm*
 Internal and external walls covering / *Revestimiento paredes interiores y exteriores*



Silver

Gold



Rose Gold

Aubergine

Mist

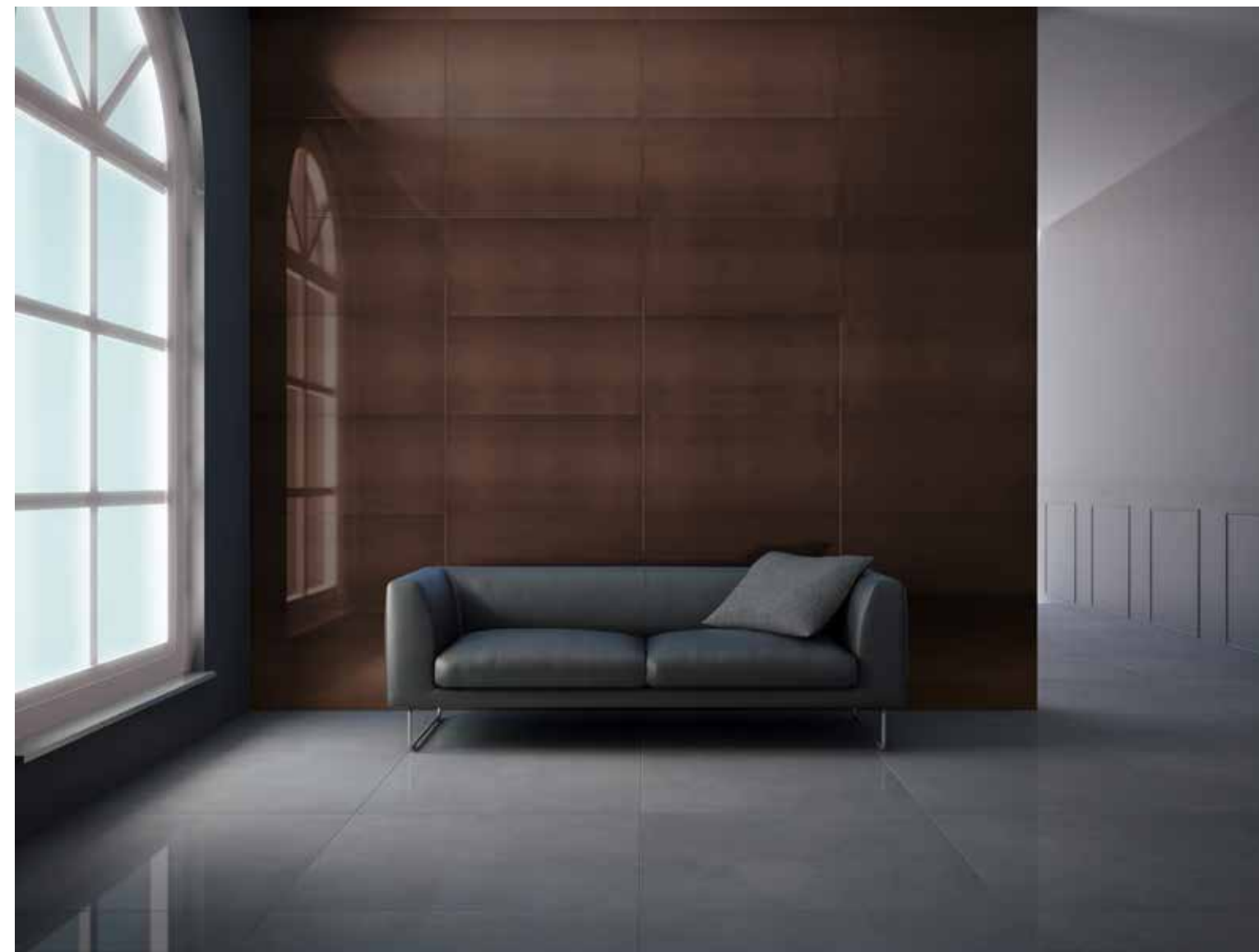
It is curious how nowadays everything old and old reminds us of the past, which is so fashionable. Like those mirrors in which one can hardly even look, but that seem to bring to the present reflections of ancient times and an elegance and distant stories that are difficult to find sometimes in contemporary designs.

MIST is inspired by aged mirrors, which give us infinite reflections and a chromatics of intense and elegant tones.

Es curioso como en la actualidad todo lo antiguo, lo envejecido, nos recuerda al pasado que está tan de moda. Como esos espejos en los que casi no puede uno ni mirarse, pero que parecen traer al presente reflejos de tiempos remotos y una elegancia e historias lejanas que cuesta encontrar a veces en los diseños contemporáneos.

La nueva serie MIST tiene su inspiración en los espejos envejecidos, que nos aportan infinitos reflejos y un cromatismo de tonos intensos y elegantes.







Mist

Porcelain tile / *Gres porcelánico*

Thickness: 10mm (0,39") / *Espesor: 10mm*

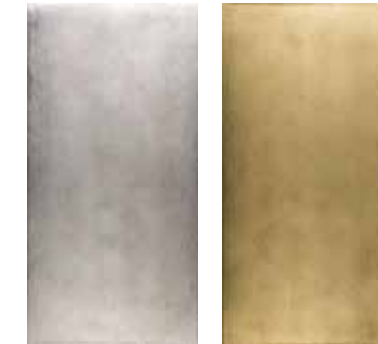
Internal and external walls covering / *Revestimiento paredes interiores y exteriores*

45x90 cm



Mist

Color <i>Color</i>	Size <i>Formato</i>	Finish <i>Acabado</i>
Silver	45x90cm - 18"x36"	Polished / <i>Pulido</i>
Gold	45x90cm - 18"x36"	Polished / <i>Pulido</i>
Rose Gold	45x90cm - 18"x36"	Polished / <i>Pulido</i>
Aubergine	45x90cm - 18"x36"	Polished / <i>Pulido</i>



Silver

Gold



Rose Gold

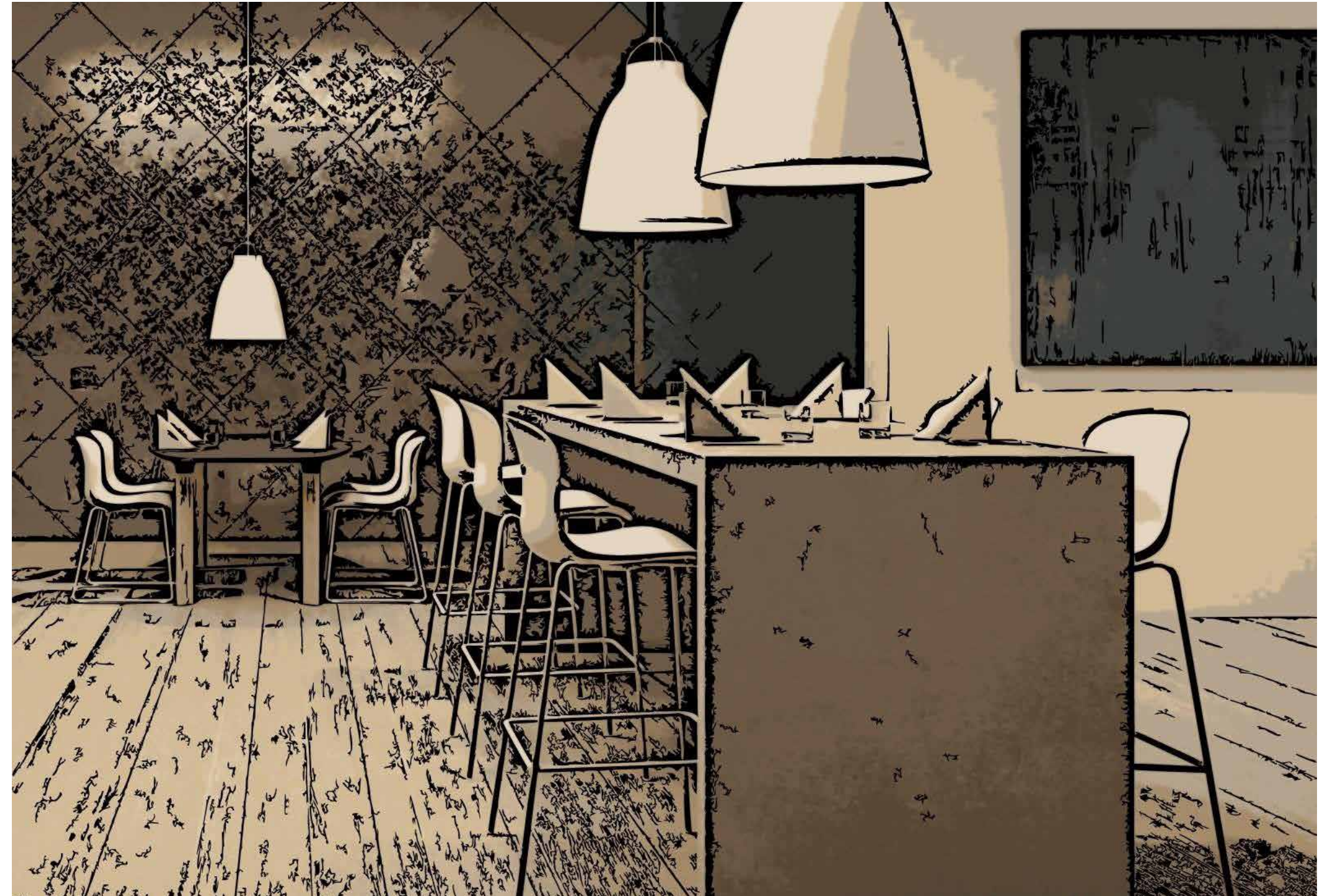
Aubergine

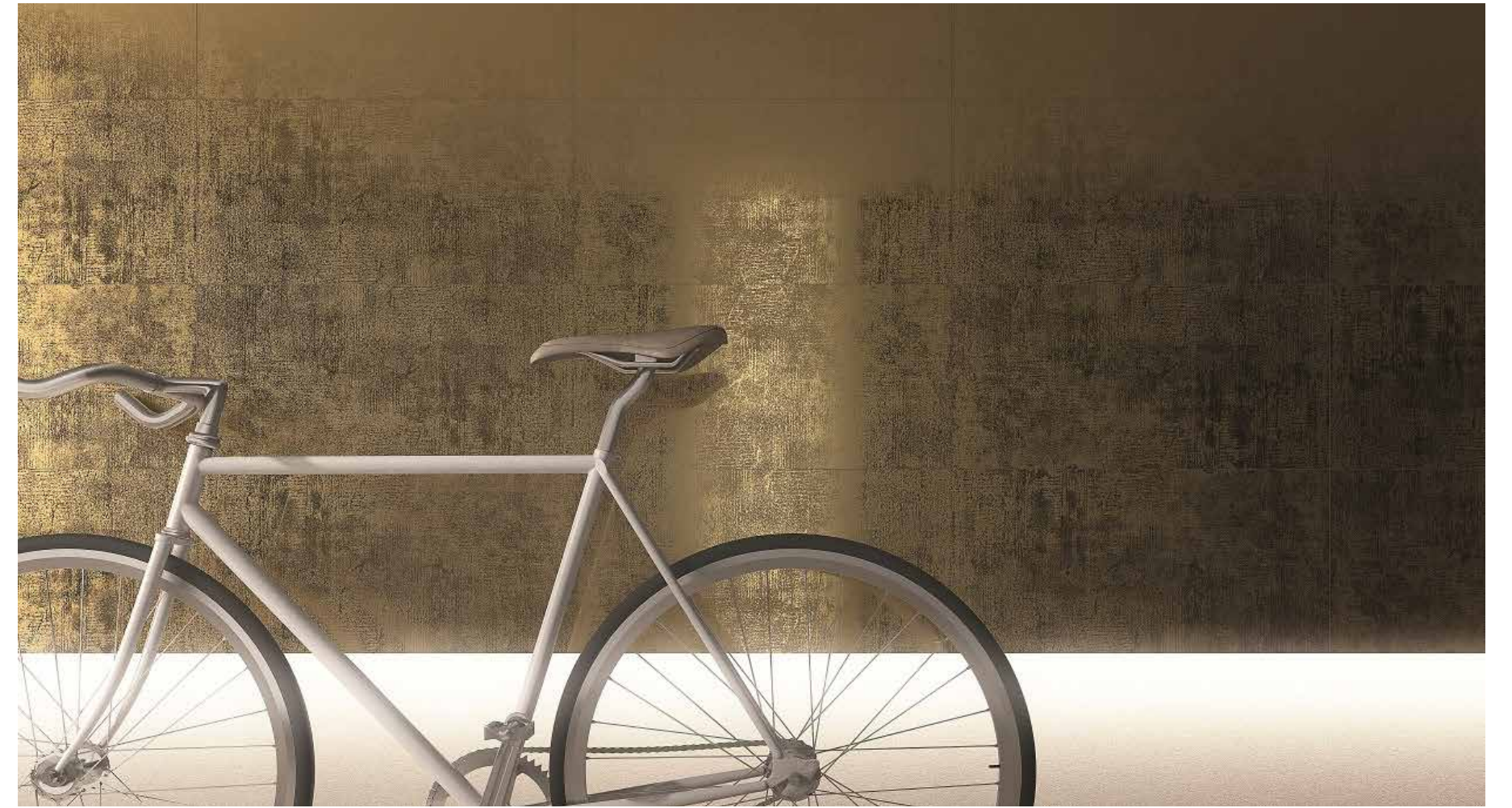
Urban

URBAN has been inspired by cement: a natural, contemporary material, consolidated as one of the strongest trends in recent years, being integrated in projects in which it loses its main characteristic of coldness. Urban has been created as a part of the semi-polished porcelain tile range, and can be coordinated with a wide range of ambiences and styles.

La serie URBAN está inspirada en el cemento, un material natural contemporáneo que se consolida como una de las tendencias más fuertes en el curso de los últimos años, integrándose en proyectos en los que se pierde su principal característica de frialdad.

Referencia estética creada como una pieza de materiales porcelánicos semipulidos, pudiéndose combinar en una gran selección de ambientes y de estilos.







Urban

Porcelain tile / *Gres porcelánico*

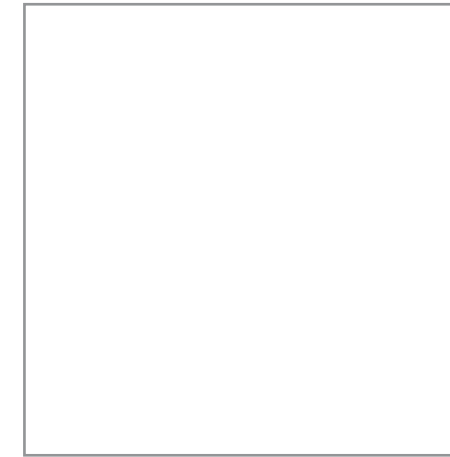
Thickness: 9mm (0,35") / *Espesor: 9mm*

Internal and external walls covering / *Revestimiento paredes interiores y exteriores*

30x60 cm



60x60 cm



Urban

Color <i>Color</i>	Size <i>Formato</i>	Finish <i>Acabado</i>
Silver	30x60cm - 12"x24"	Lappato / <i>Lappato</i>
	60x60cm - 24"x24"	
Gold	30x60cm - 12"x24"	Lappato / <i>Lappato</i>
	60x60cm - 24"x24"	
Rose Gold	30x60cm - 12"x24"	Lappato / <i>Lappato</i>
	60x60cm - 24"x24"	
Aubergine	30x60cm - 12"x24"	Lappato / <i>Lappato</i>
	60x60cm - 24"x24"	
Black	30x60cm - 12"x24"	Lappato / <i>Lappato</i>
	60x60cm - 24"x24"	
Cream	30x60cm - 12"x24"	Lappato / <i>Lappato</i>
	60x60cm - 24"x24"	



Silver

Gold

Rose Gold



Aubergine

Black

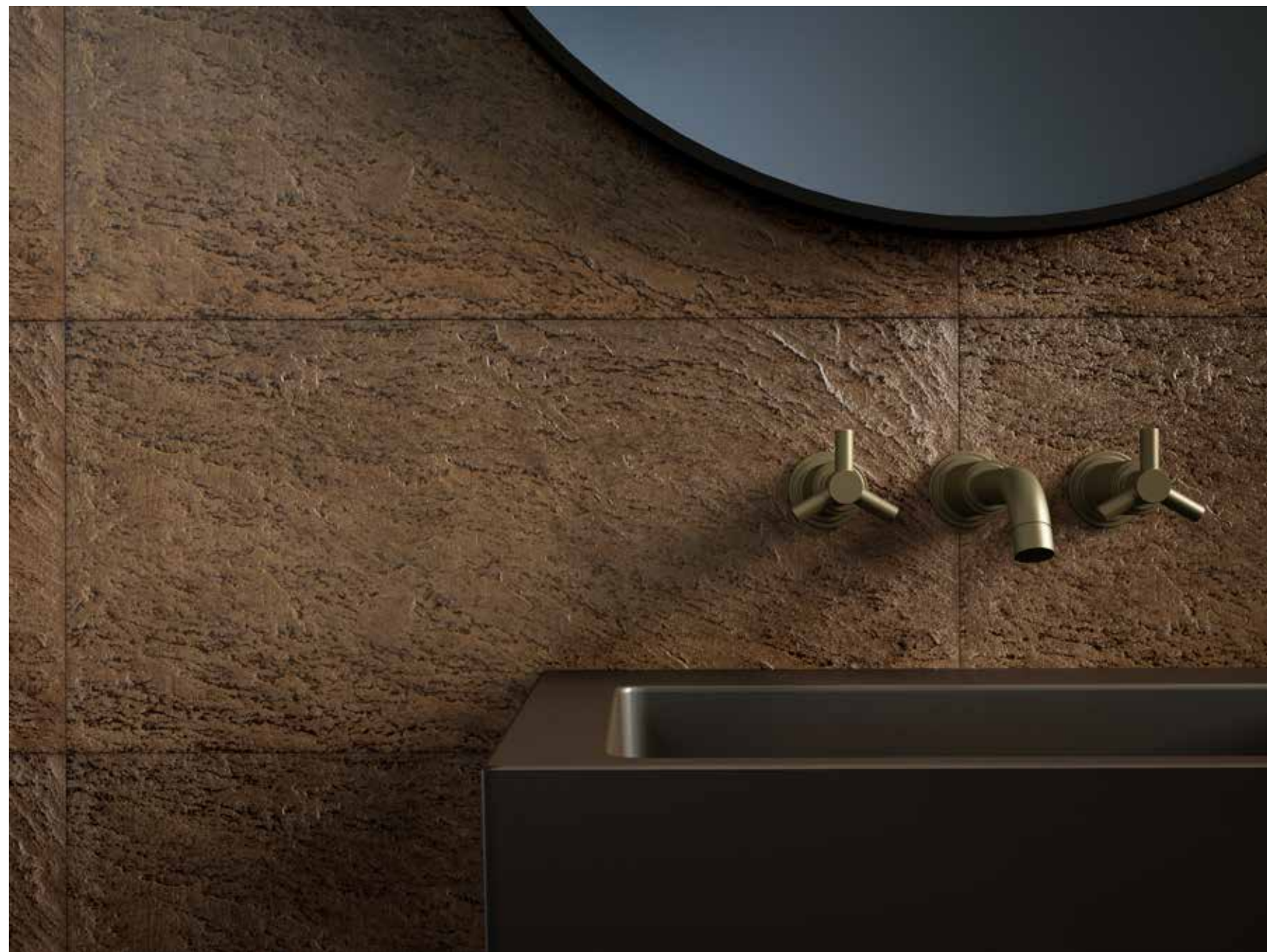
Cream

Slate

With SLATE we surprise once again the interior design with new aesthetic languages, from ceramics that emulates the natural stone, rendering a clear tribute to metal. The degree of loyalty is such that the appearance has never been so sincere.

Con la serie SLATE volvemos a sorprender al interiorismo con nuevos lenguajes estéticos, a partir de cerámica que emula a la piedra natural, rindiendo un claro homenaje al metal. El grado de fidelidad es tal que la apariencia nunca fue tan sincera







Slate

Porcelain tile / *Gres porcelánico*

Thickness: 9mm (0,35") / *Espesor: 9mm*

Internal and external walls covering / *Revestimiento paredes interiores y exteriores*

31x63 cm



Slate

Color <i>Color</i>	Size <i>Formato</i>	Finish <i>Acabado</i>
Silver	31x63cm - 12,4"x24,3"	Semipolished / Natural <i>Semipulido / Natural</i>
Gold	31x63cm - 12,4"x24,3"	Semipolished / Natural <i>Semipulido / Natural</i>
Rose Gold	31x63cm - 12,4"x24,3"	Semipolished / Natural <i>Semipulido / Natural</i>
<i>Black</i>	31x63cm - 12,4"x24,3"	Semipolished / Natural <i>Semipulido / Natural</i>
<i>White</i>	31x63cm - 12,4"x24,3"	Semipolished / Natural <i>Semipulido / Natural</i>



Silver

Gold

Rose Gold



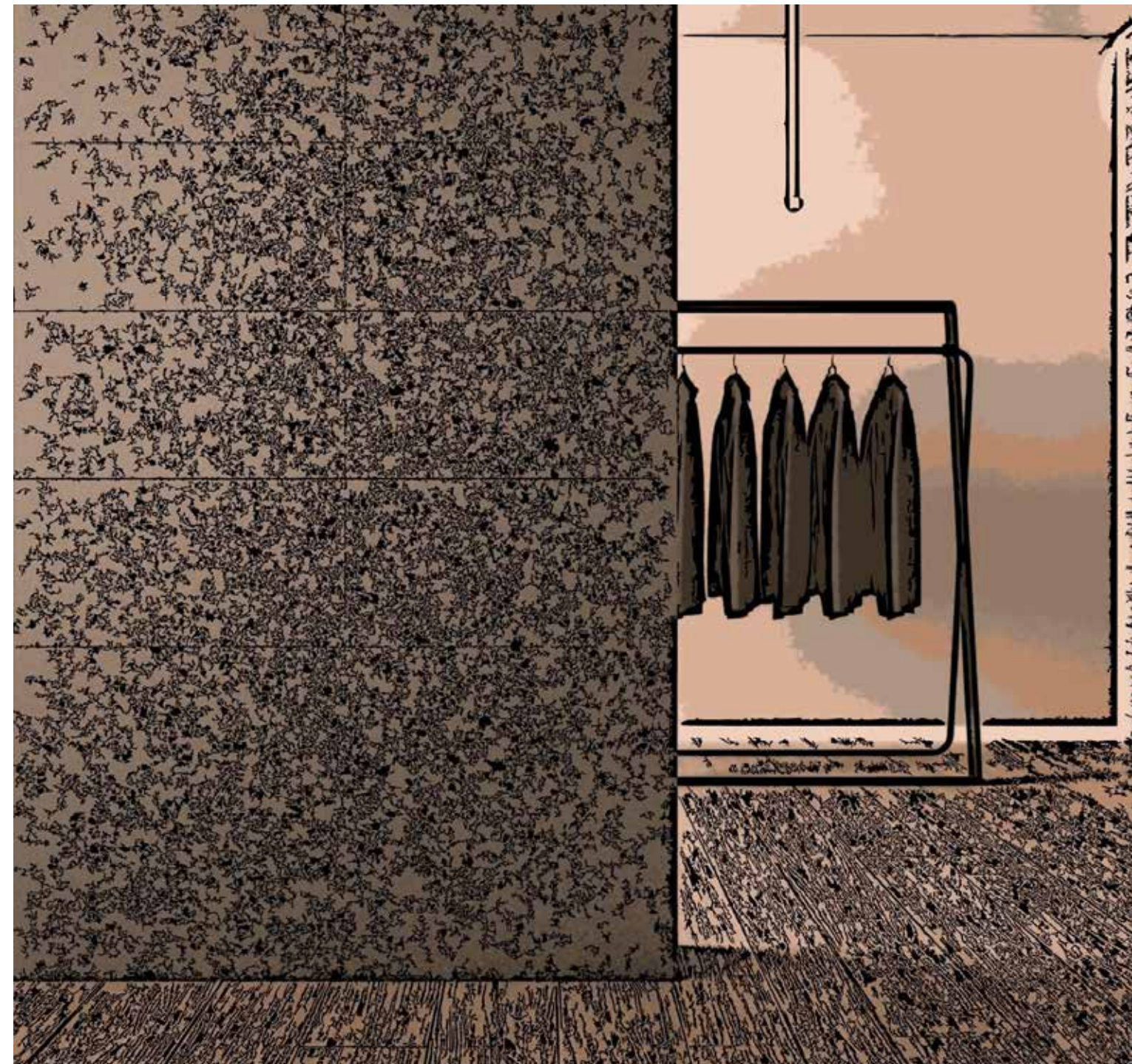
Black

White

Artic

Series drawing a trend that consolidates its leadership announced its metallic finish, with which it has a perfect combination of avant-garde that projects the metal and the classic touch of glamour that is generated.

La serie ARTIC dibuja una tendencia anunciada que se consolida con protagonismo por su acabado metálico, con la que se muestra una perfecta combinación entre el vanguardismo que proyecta el metal y el toque clásico de glamour que se genera.





Artic

Porcelain tile / *Gres porcelánico*

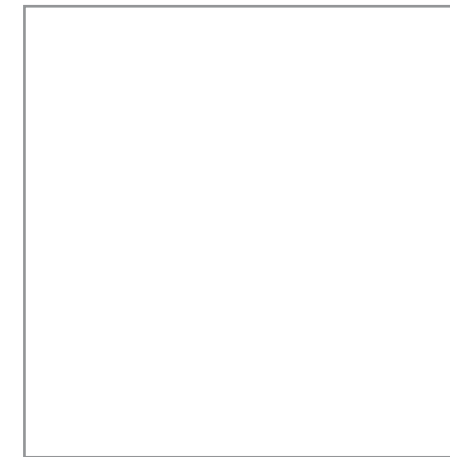
Thickness: 9mm (0,35") / *Espesor: 9mm*

Internal and external walls covering / *Revestimiento paredes interiores y exteriores*

30x60 cm

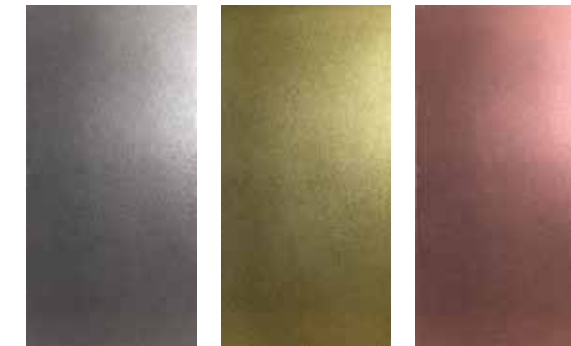


60x60 cm



Artic

Color <i>Color</i>	Size <i>Formato</i>	Finish <i>Acabado</i>
Silver	30x60cm - 12"x24"	Natural / <i>Mate</i>
	60x60cm - 24"x24"	
Gold	30x60cm - 12"x24"	Natural / <i>Mate</i>
	60x60cm - 24"x24"	
Rose Gold	30x60cm - 12"x24"	Natural / <i>Mate</i>
	60x60cm - 24"x24"	
Aubergine	30x60cm - 12"x24"	Natural / <i>Mate</i>
	60x60cm - 24"x24"	
Black	30x60cm - 12"x24"	Natural / <i>Mate</i>
	60x60cm - 24"x24"	
Cream	30x60cm - 12"x24"	Natural / <i>Mate</i>
	60x60cm - 24"x24"	



Silver

Gold

Rose Gold



Aubergine

Black

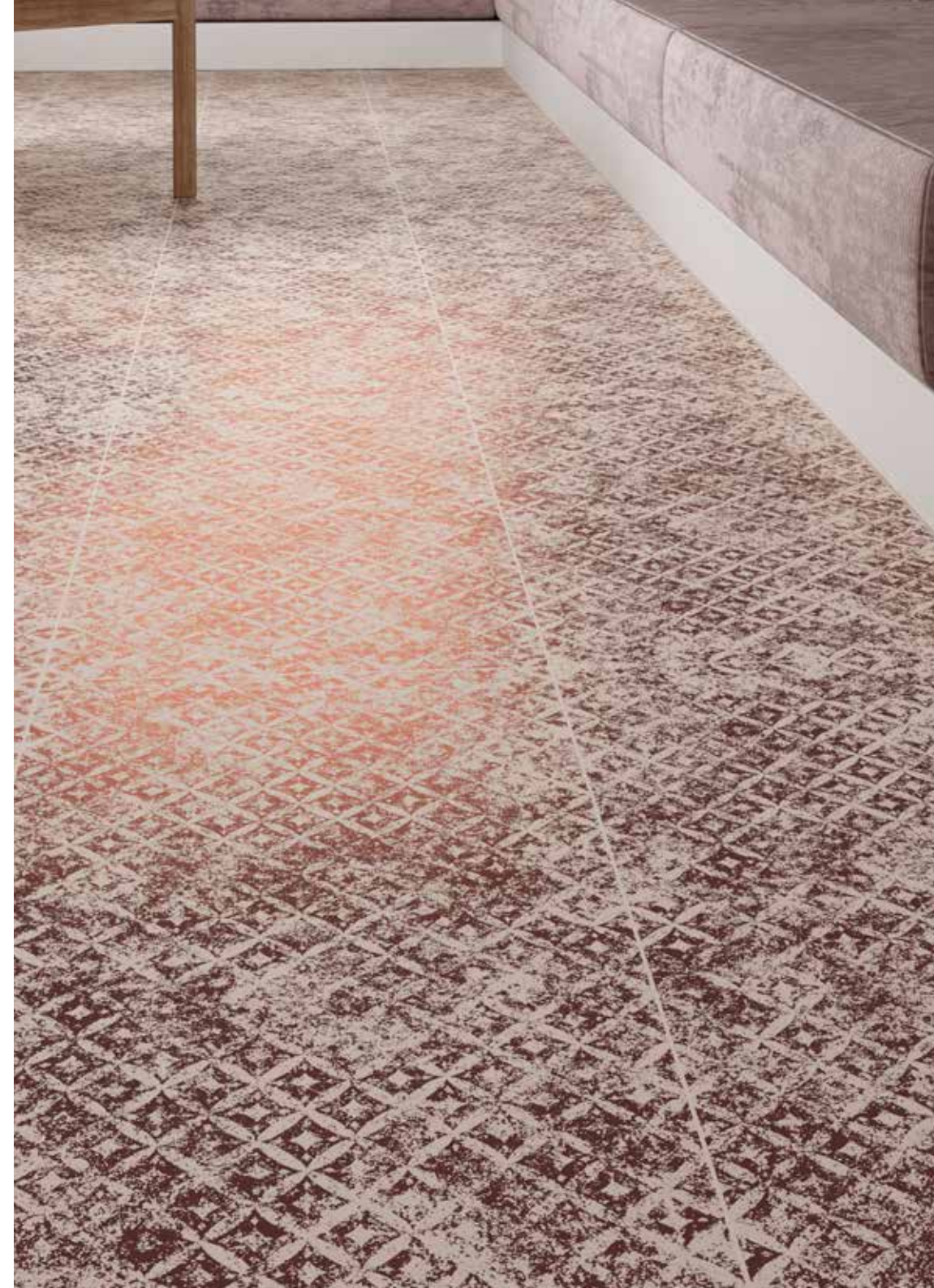
Cream

Fusion

FUSION shapes the walls and covers them with a rich and elegant oxide-like proposal, similar to a sheet of metal aged by atmospheric agents. Its surface is characterized by the live and solid appearance of iron, with its particular chromatic nuances and roughness to the touch.

FUSIÓN da forma a las paredes y las reviste de una rica y elegante propuesta de aspecto óxido, similar a una lámina de metal envejecida por agentes atmosféricos. Su superficie se caracteriza por el aspecto vivo y sólido del hierro, con sus particulares matices cromáticos y rugosidad al tacto.





Fusion

30x60 cm



Fusion

Color <i>Color</i>	Size <i>Formato</i>	Finish <i>Acabado</i>
Cream Gold	30x60cm - 12"x24"	Natural / <i>Mate</i>
Cream Rose Gold	30x60cm - 12"x24"	Natural / <i>Mate</i>
Grey Silver	30x60cm - 12"x24"	Natural / <i>Mate</i>
Black Gold	30x60cm - 12"x24"	Natural / <i>Mate</i>

Porcelain tile / *Gres porcelánico*
 Thickness: 9mm (0,35") / *Espesor: 9mm*
 Internal and external wall and floor covering / *Revestimiento paredes y suelos interiores y exteriores*



Cream Gold

Grey Silver



Cream Rose Gold

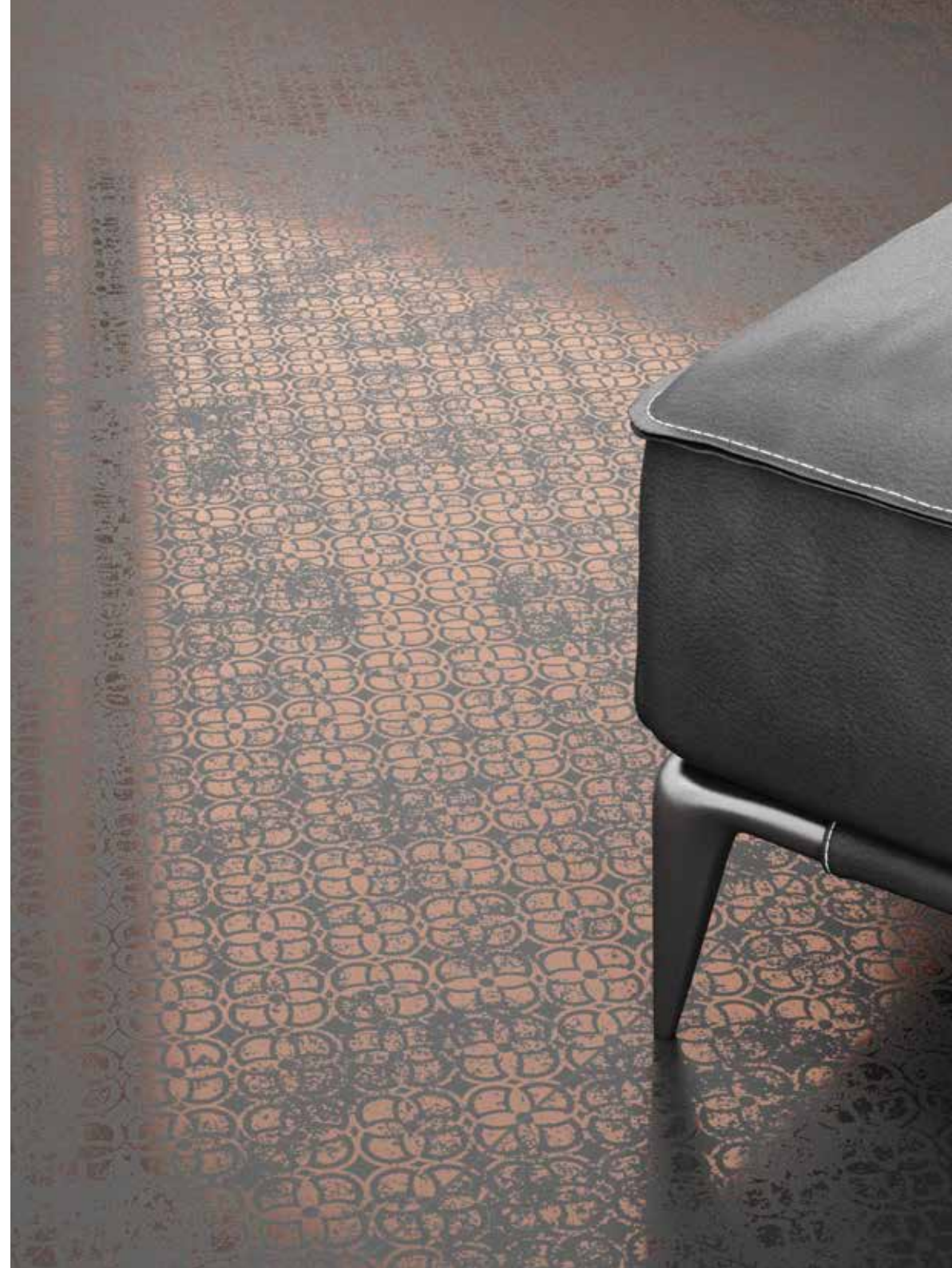
Black Gold

Tempo

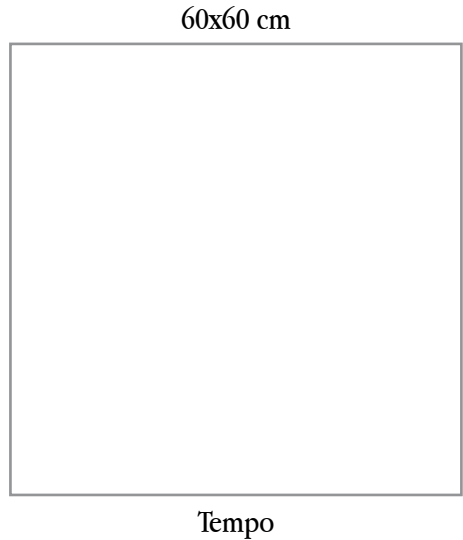
TEMPO inspires timeless designs with its appearance of rusty solid concrete, preferred by those who dream of more industrial spaces, being open to all kinds of challenges for designers with its contrast structure that contains natural oxide colored tones.

TEMPO inspira diseños atemporales con su aspecto de hormigón macizo oxidado, preferido por aquellos que sueñan con espacios más industriales, estando abierto a todo tipo de desafíos para los diseñadores con su estructura de contraste que contiene tonos de colores de óxido natural.





Tempo



Color <i>Color</i>	Size <i>Formato</i>	Finish <i>Acabado</i>
Cream Gold	60x60cm - 24"x24"	Natural / <i>Mate</i>
Grey Silver	60x60cm - 24"x24"	Natural / <i>Mate</i>
Black Silver	60x60cm - 24"x24"	Natural / <i>Mate</i>
Black Rose Gold	60x60cm - 24"x24"	Natural / <i>Mate</i>

Porcelain tile / *Gres porcelánico*
 Thickness: 10mm (0,39") / *Espesor: 10mm*

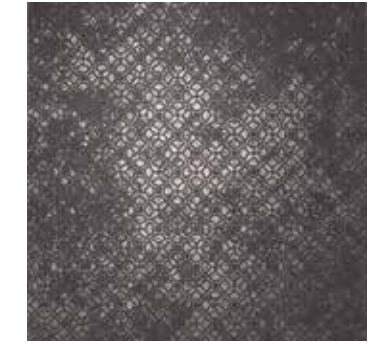
Internal and external wall and floor covering / *Revestimiento paredes y suelos interiores y exteriores*



Cream Gold



Grey Silver



Black Silver



Black Rose Gold

Technical Data

Uses complete list

SERIE	FINISH	Indoors	Outdoors	Wall	Floor light traffic	Shower floor	Shower wall	High vapour condensation areas (sauna, turkish bath)
<i>Dover</i>	<i>Metal Colors</i>	✓		✓		✓	✓	
<i>Kondo</i>	<i>Metal Colors</i>	✓		✓	✓	✓	✓	
<i>Metrik</i>	<i>Metal Colors</i>	✓		✓	✓	✓	✓	
<i>Trames</i>	<i>Metal Colors</i>	✓		✓	✓	✓	✓	
<i>Angles</i>	<i>Metal Colors</i>	✓		✓		✓	✓	
<i>Cosmos</i>	<i>Metal Colors</i>	✓		✓		✓	✓	
<i>Become</i>	<i>Colors</i>	✓		✓		✓	✓	
<i>Madreperla</i>	<i>Metal</i>	✓		✓		✓	✓	
<i>2Lines</i>	<i>Colors</i>	✓	✓	✓		✓	✓	
<i>Mist</i>	<i>Metal</i>	✓	✓	✓		✓	✓	
<i>Urban</i>	<i>Colors</i>	✓	✓	✓	✓	✓	✓	✓
<i>Slate</i>	<i>Metal</i>	✓	✓	✓	✓	✓	✓	✓
<i>Artic</i>	<i>Colors</i>	✓	✓	✓		✓	✓	
<i>Fusion</i>	<i>Metal</i>	✓	✓	✓	✓	✓	✓	✓
<i>Tempo</i>	<i>Colors</i>	✓	✓	✓	✓	✓	✓	✓

Laying advice

Steps and recommendations to install and enhance your INTHETILE product

1. Choosing a ceramic tile

When choosing a ceramic tile to cover a certain surface, attention must be paid to a series of aesthetic (color, design, texture, etc.) and technical (physical-chemical features, etc.) conditions. The technical factors for an adequate choice will depend on the specific situation, weather conditions in region, and expected use.

The ceramic pieces contained in this catalog are decorated with a thin metal application. Manipulate with special care. Improper handling (scratching and/or scraping) and improper use of abrasive detergents can damage the pieces. Treat these in particular with extreme careful.

These products are not suitable for wet areas like public spas or swimming pools where aggressive saline and/or disinfectant products like bleach are used.

2. Initial verification

Prior to placing the ceramic tile, the client should check that it is in agreement with the requested features (model, quality, shape, tone, gage, etc.). If any ceramic piece is defective, do not use and communicate this to your provider. Not accept any claims once placed the product.

Verify base is firm, clean and dry. Base must be completely flat and level, any irregularities must be filled in to level.

3. Lay out

It is recommended that the layout of the product is prepared before the final installation. The surface for placing the tiles must be flat, firm, stable and compatible with the placing and jointing material.

We recommend using cement glue with polymeric additives as fitting material. For installation on porous surfaces we recommended Kerakoll Special ECO and for non-porous surfaces, Kerakoll H40 Eco.

Before preparing the binding material, check the manufacturer's indications (way to use, etc).

The bonding materials are applied with a notched trowel to ensure optimal distribution across the surface. Should be avoided that the residues of fitting material get dry, remaining adhered on the

surface of pieces, using a slightly damp sponge to clean the tile joints, passing it diagonally across them. Do not use dirty or brackish water.

Put the pieces into their place pressing smoothly. It is not necessary to apply extra adhesive on the piece.

4. Jointing

For technical reasons, it is not advisable to lay ceramic tiles without the corresponding layout joint. Use 1mm in spacers between the pieces.

For choosing the jointing material, one should take into account the place where the tiles (floor or wall) are fitted and their situation (indoor or outdoor), the use of joints with polymeric additives or synthetic resins being recommendable, and not Portland cement grout.

We recommended Kerakoll Fugabella Eco Porcelana 0-5 and for areas susceptible to stains such as the backsplash, we recommended Kerakoll Fugalite Eco.

5. Cutting

When laying tiles, it is necessary to cut the tiles to adapt them to the geometry of the place to decorate.

We recommended a hand cutting tool fitted with a widia scoring wheel.

With reference to the size of the scoring wheel, it is recommended to use one of an 8-mm diameter for tiles with flat surface, and of an 18-mm diameter for tiles with a rough surface.

6. Cleaning

Do not use commercial products known as cement removers or scale removers, acid solutions used mainly to remove cement debris (work debris).

For cleaning excess installation materials before they have dried, use a sponge and plenty of water.

For subsequent cleanings we recommend the use of a soft dampened in water and neutral soap.

Do not use powder detergents, nor metallic mops or abrasives. Do not use abrasive, acidic or alkaline cleaning products. Use a soft sponge with liquid soap and water to clean the tiles, and then dry them with a fine cloth.

@INTHETILE
ITT Collection Catalogue 2022

Inthetile, S.L.
Pol. Ind. Mijares.
C/ Villarreal, 70 - Nave 17
12550 Almazora
(CS) - España

+34 964 200 652
info@inthetile.com
www.inthetile.com

www.inthetile.com